



BUMA TEC CO., LTD.
BUMA Technical Compressor



High Efficiency Cost Saving Quiet Operation

BUMA SCREW AIR COMPRESSOR

Belt Drive Type BFB11

BUILT ON TRUST

BFB11

Specification

Surrounding

| | |
|------------------|-------------------------|
| Atmosphere | 760 mmHg |
| Working Pressure | 8.0 kgf/cm ² |
| Max. Temperature | 46 °C |

Compressor

| | |
|------------------------|--|
| Free Air Delivery | 1.6 m ³ /min at 8.0 kgf/cm ² |
| Cooling Method | Air Cooled by Cooling Fan |
| Outlet Air Temperature | Ambient Temp. +15°C |
| Operation Control | |
| Driven Method | Belt Driven |

Electric Motor

| | |
|----------------|-----------------------|
| Rating Power | 11kW (15Hp) |
| Power Source | AC380V/3-Phase (50Hz) |
| Start Method | Y-Δ |
| Pole / RPM | 2 pole / 2920 rpm |
| Service Factor | 1.15 |
| IP Class | IP 54 |
| Enclosing | |

Others

| | |
|-----------------|-----------------------|
| Oil Volume | 8 l |
| Noise level | 72 dBA |
| Pipe connection | 20A |
| Dimension | 800mm x 720mm x 830mm |
| Weight | 300 Kg |

Controller

| | |
|-----------------------|--|
| Compressor Controller | Micro Controller |
| Power Source | AC380V, 3 Phase (Built-in Transformer) |
| Pressure Control | Continuous Pressure Control by Pressure Sensor |
| Control Method | Loading & Unloading Control |
| Operation Mode | <ul style="list-style-type: none"> • Automatic Mode • Continuous Mode • Remote Mode • Schedule Mode (Default: Automatic) |

Error Detecting Function & Auto-Control Function (LCD & LED Display)

| | |
|------------------------------------|---|
| ◆ System Trip and Warning Function | <ul style="list-style-type: none"> - Outlet Air Temperature High - Main Motor Overload - Fan Motor Overload - Pressure & Temperature Sensor Fault |
| ◆ Auto-Control Function | <ul style="list-style-type: none"> - Stop Delay Function - Re-start Pressure - Automatic Start |

Maintenance Function (LCD & LED Display)

| | |
|--------------------------------|--|
| ◆ Air Filter Change Warning | |
| ◆ Oil Filter Change Warning | |
| ◆ Oil Separator Change Warning | |

Operation Status Display (LCD & LED Display)

| | |
|--------------------------|--|
| ◆ Outlet Air Pressure | |
| ◆ Outlet Air Temperature | |
| ◆ Operation Mode | |
| ◆ Load / Unload Status | |

Statistics Function

| | |
|-------------------------------|--|
| ◆ Amot Clock (Automatic Time) | |
| ◆ Total Operating Hour | |
| ◆ Load / Unload Hour | |
| ◆ Set Stop Delay Time | |

BFB11

Components



Electric Motor x 1unit

| | |
|-------------------|-------------------------------|
| Type | Y2-132M-2 |
| Rated Power | 11 kw (15 HP) |
| Service Motor | 1.15 |
| Electric Source | AC380, 3-Phase, 50 Hz |
| Mode of Operation | S1, Continuous Operation Mode |
| Pole / RPM | 2-Pole / 2920 rpm at 50Hz |
| Cooling Method | Built-in Fan Cooled |
| Lubrication | CHERROM |
| Starting Method | Start-Delta |



Screw Airend x 1unit

| | |
|-------------------|---------------------------------|
| Model | 3.47.010008 |
| Compression | Oil Flooded 1-Stage Compression |
| Rotor Combination | 5 x 6 (Male * Female) |
| Pressure Range | 5 ~ 13 bar |
| Operation Speed | 4900rpm |

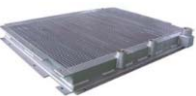


Suction Air Filter x 1unit

| | |
|------------------|----------------------------|
| Model | BUMA Genuine Filter |
| Filtration grade | 2 μm / Min. 99.8 % (3 ppm) |

Lubrication Oil Circulation

| | |
|--|--------|
| Combined Cooler - Aluminum Wing Type Cooler (for Air / Oil Cooling) | 1 unit |
| Oil Filter Housing | 1 unit |
| Oil Filter (BUMA Genuine Filter) | 1 unit |
| Oil Line - Seamless Tubing&O-ring Type Parker Fitting | 1 set |
| Cooling Fan - Low Noise Centrifugal Fan | 1 unit |
| Fan Motor (AC380V) | 1 unit |



Instrument Panel

| | |
|---|--------|
| Controller (BUMA Controller) | 1 unit |
| Pressure Sensor - Pressure Range : 0 ~ 16 kgf/cm2 - Power Source : DC 24V - Analog Output : DC 0.1 ~ 10 V | 1 unit |
| Temperature Sensor - Outlet Air Temperature | 1 unit |
| Pressure Switch - No. 1: Detecting Compressor Sump Pressure - No. 2: Stand-by for Failure of Pressure Sensor | 1 unit |
| Main EOCR - For Detecting Main Motor Overload | 1 unit |
| Fan EOCR - For Detecting Fan Motor Overload | 1 unit |
| Display LED (Trip) - Main Motor Overload - Discharge Air Temperature High | 1 set |
| Display LED (Warning) - Filter Change - Discharge Temperature High | 1 set |
| Operation Status - LED and Lamp Display (Mode, Load/Unload) | 1 set |
| Start Box - Including Transformer and Converter - Control : DC24V, AC220V | 1 set |
| Emergency Switch | 1 unit |



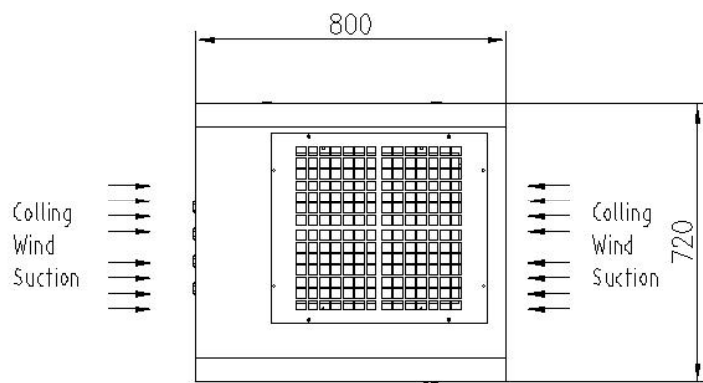
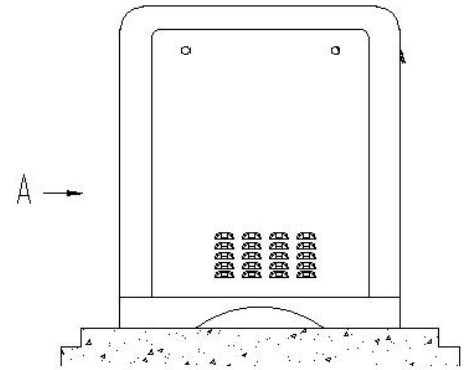
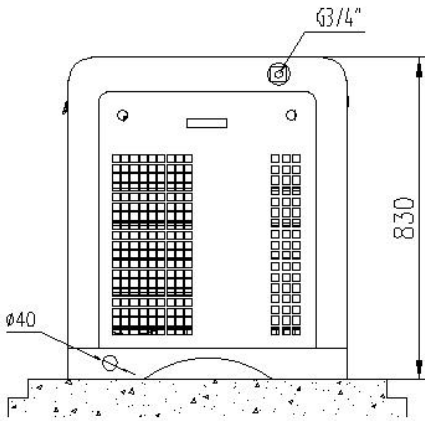
Pneumatic & Electric Valves

| | |
|--|--------|
| Intake Valve (HX DN25) | 1 unit |
| Minimum Pressure Valve (HX) | 1 unit |
| Solenoid Valve - For Controlling Intake Valve and Purge Valve | 1 unit |
| Safety Valve - A28X-16T (DN15) | 1 unit |
| Purge Valve (HX) | 1 unit |

BFB11

Appearance Drawing

Unit: mm



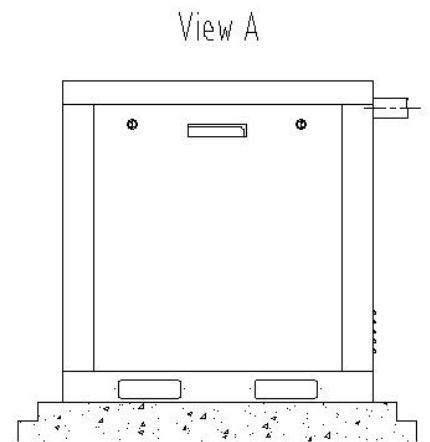
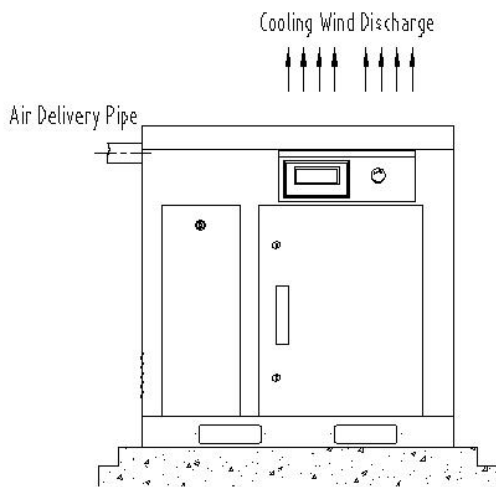
Dimension

Length : 800 mm

Width : 720 mm

Height : 830 mm

Weight : 300Kg



BUILT ON TRUST

www.bumatec.com



**WEST OF JIUJING ROAD,
DANYANG ECONOMIC DEVELOPMENT ZONE,
JIANGSU, CHINA (Zip Code: 212300)
TEL: +86-551-6220030
FAX: +86-511-86220032
Email: buma@bumatec.com**