



BUMA TEC CO., LTD.
BUMA Technical Compressor



High Efficiency **Cost Saving** **Quiet Operation**

BUMA SCREW AIR COMPRESSOR

Belt Drive Type BFB15

BUILT ON TRUST

BFB15

Specification

Surrounding

Atmosphere	760 mmHg
Working Pressure	8.0 /kgf/cm ²
Max. Temperature	46 °C

Compressor

Free Air Delivery	2.3 m ³ /min at 8.0 kgf/cm ²
Cooling Method	Air Cooled by Cooling Fan
Outlet Air Temperature	Ambient Temp. +15°C
Operation Control	
Driven Method	Belt Driven

Electric Motor

Rating Power	15kW (20Hp)
Power Source	AC380V/3-Phase (50Hz)
Start Method	Y-Δ
Pole / RPM	2 pole / 2930 rpm
Service Factor	1.15
IP Class	IP 54
Enclosing	

Others

Oil Volume	10 ℓ
Noise level	72 dBA
Pipe connection	20A
Dimension	1150mm x 800mm x 1100mm
Weight	390 Kg

Controller

Compressor Controller	Micro Controller
Power Source	AC380V, 3 Phase (Built-in Transformer)
Pressure Control	Continuous Pressure Control by Pressure Sensor
Control Method	Loading & Unloading Control
Operation Mode	<ul style="list-style-type: none"> • Automatic Mode • Continuous Mode • Remote Mode • Schedule Mode (Default: Automatic)

Error Detecting Function & Auto-Control Function (LCD & LED Display)

◆ System Trip and Warning Function	<ul style="list-style-type: none"> - Outlet Air Temperature High - Main Motor Overload - Fan Motor Overload - Pressure & Temperature Sensor Fault
◆ Auto-Control Function	<ul style="list-style-type: none"> - Stop Delay Function - Re-start Pressure - Automatic Start

Maintenance Function (LCD & LED Display)

◆ Air Filter Change Warning	
◆ Oil Filter Change Warning	
◆ Oil Separator Change Warning	

Operation Status Display (LCD & LED Display)

◆ Outlet Air Pressure	
◆ Outlet Air Temperature	
◆ Operation Mode	
◆ Load / Unload Status	

Statistics Function

◆ Amot Clock (Automatic Time)	
◆ Total Operating Hour	
◆ Load / Unload Hour	
◆ Set Stop Delay Time	



BFB15

Components



Electric Motor x 1unit

Type	Y2-160M2-2
Rated Power	15 kw (20 HP)
Service Motor	1.15
Electric Source	AC380, 3-Phase, 50 Hz
Mode of Operation	S1, Continuous Operation Mode
Pole / RPM	2-Pole / 2930 rpm at 50Hz
Cooling Method	Built-in Fan Cooled
Lubrication	CHERROM
Starting Method	Start-Delta



Screw Airend x 1unit

Model	3.47.020014
Compression	Oil Flooded 1-Stage Compression
Rotor Combination	5 x 6 (Male * Female)
Pressure Range	5 ~ 13 bar
Operation Speed	3400 rpm

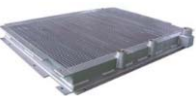


Suction Air Filter x 1unit

Model	BUMA Genuine Filter
Filtration grade	2 μm / Min. 99.8 % (3 ppm)

Lubrication Oil Circulation

Combined Cooler - Aluminum Wing Type Cooler (for Air / Oil Cooling)	1 unit
Oil Filter Housing	1 unit
Oil Filter (BUMA Genuine Filter)	1 unit
Oil Line - Seamless Tubing&O-ring Type Parker Fitting	1 set
Cooling Fan - Low Noise Centrifugal Fan	1 unit
Fan Motor (AC380V)	1 unit



Instrument Panel

Controller (BUMA Controller)	1 unit
Pressure Sensor - Pressure Range : 0 ~ 16 kgf/cm2 - Power Source : DC 24V - Analog Output : DC 0.1 ~ 10 V	1 unit
Temperature Sensor - Outlet Air Temperature	1 unit
Pressure Switch - No. 1: Detecting Compressor Sump Pressure - No. 2: Stand-by for Failure of Pressure Sensor	1 unit
Main EOCR - For Detecting Main Motor Overload	1 unit
Fan EOCR - For Detecting Fan Motor Overload	1 unit
Display LED (Trip) - Main Motor Overload - Discharge Air Temperature High	1 set
Display LED (Warning) - Filter Change - Discharge Temperature High	1 set
Operation Status - LED and Lamp Display (Mode, Load/Unload)	1 set
Start Box - Including Transformer and Converter - Control : DC24V, AC220V	1 set
Emergency Switch	1 unit



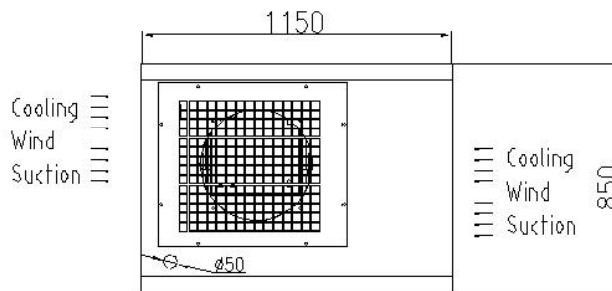
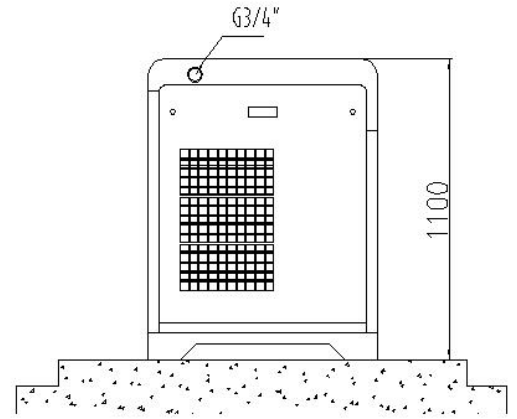
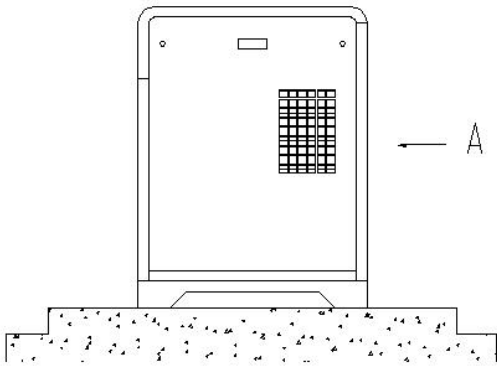
Pneumatic & Electric Valves

Intake Valve (HX DN50)	1 unit
Minimum Pressure Valve (HX)	1 unit
Solenoid Valve - For Controlling Intake Valve and Purge Valve	1 unit
Safety Valve - A28X-16T (DN15)	1 unit
Purge Valve (HX)	1 unit

BFB15

Appearance Drawing

Unit: mm



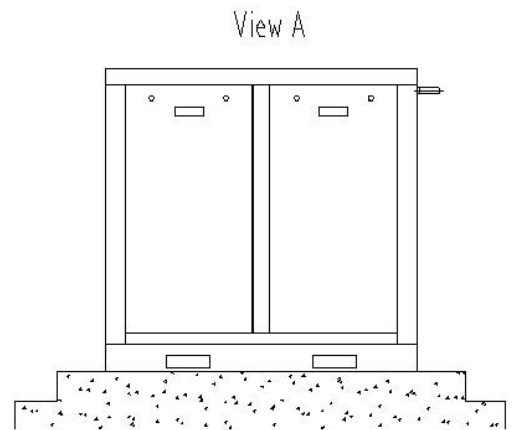
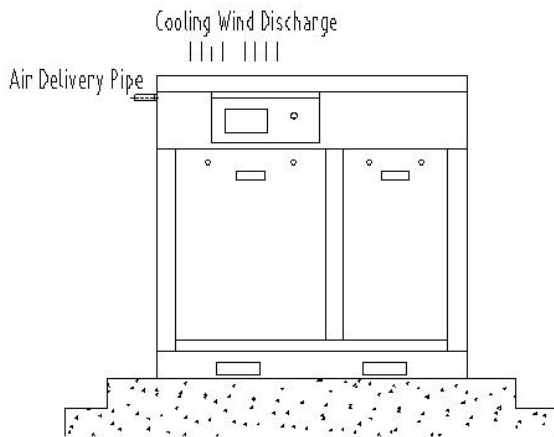
Dimension

Length : 1,150 mm

Width : 850 mm

Height : 1,100 mm

Weight : 390 Kg



BUILT ON TRUST

www.bumatec.com



**WEST OF JIUJING ROAD,
DANYANG ECONOMIC DEVELOPMENT ZONE,
JIANGSU, CHINA (Zip Code: 212300)
TEL: +86-551-6220030
FAX: +86-511-86220032
Email: buma@bumatec.com**